

Rabies Virus Ag Rapid Test Kit

◇ INTENDED USE

The Rabies Virus Antigen Rapid Test is a lateral flow immunochromatographic assay for the qualitative detection of rabies virus antigen (Rabies Ag) in dog's saliva or cerebrospinal fluid.

Assay Time: 5-10 minutes

Specimen: saliva or cerebrospinal fluid

◇ PRINCIPLE

The Rabies Virus Antigen Rapid Test is based on sandwich lateral flow immunochromatographic assay. The test device has a testing window for the observation of assay running and result reading. The testing window has an invisible T (test) zone and a C (control) zone before running the assay. When the treated sample was applied into the sample hole on the device, the liquid will laterally flow through the surface of the test strip and react with the pre-coated monoclonal antibodies. If there is Rabies antigen in the specimen, a visible T line will appear. The C line should always appear after a sample is applied, which indicates a valid result. By this means, the device can accurately indicate the presence of Rabies virus antigen in the specimen.

◇ REAGENTS AND MATERIALS

- Foil pouches (each contains one test cassette, one disposable dropper and one desiccant)
- Assay buffer
- Cotton swabs
- Products Manual

◇ STORAGE AND STABILITY

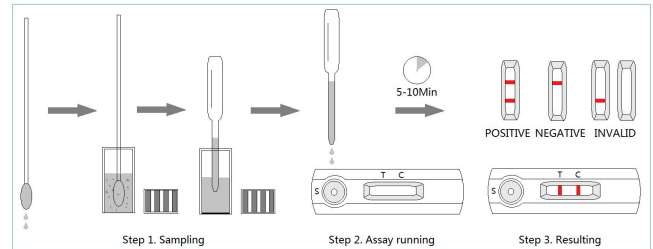
The kit can be stored at room temperature (4-30°C). The test kit is stable through the expiration date marked on the package label. DO NOT FREEZE. Do not store the test kit in direct sunlight.

◇ TEST PROCEDURE

Allow all materials, including specimen and test device, recover to 15-25°C before running the assay.

- Collect dog's saliva with the cotton swab and make the swab wet sufficiently. If dissection is available, using the cotton swab to collect cerebrospinal fluid for the assay.
- Insert the wet swab into the provided assay buffer tube. Agitates it to get efficient sample extraction.
- Take out the test device from the foil pouch and place it horizontally.

- Suck the treated sample extraction from the assay buffer tube and place 3 drops into the sample hole "S" of the test device.
- Interpret the result in 5-10 minutes. Result after 10 minutes is considered as invalid.



◇ INTERPRETATION OF RESULTS


- Positive (+): The presence of both "C" line and zone "T" line, no matter T line is clear or vague.
- Negative (-): Only clear C line appear. No T line.
- Invalid: No colored line appears in C zone. No matter if T line appears.

◇ PRECAUTIONS

- All reagents must be at room temperature before running the assay.
- Do not remove test cassette from its pouch until immediately before use.
- Do not use the test beyond its expiration date.
- The components in this kit have been quality control tested as standard batch unit. Do not mix components from different lot numbers.
- All specimens are of potential infection. It must be strictly treated according to the rules and regulations by local states.

◇ LIMITATION

Rabies Virus Antigen Rapid Test is for in vitro veterinary diagnosis use only. All result should be considered with other clinical information available with veterinarian. It is suggested to apply a further confirmative method such as RT-PCR when positive result was observed.

 Bifour Biotech Inc.
4677 Old Ironsides Drive, Suite 300, Santa Clara,
CA, USA 95054
Email: info@bifour.com