

# CDV Ag+CAV Ag+CIV Ag Combo Rapid Test (CDV-CAV-CIV Ag)

Catalog No.: JCA025D

## ◇ INTENDED USE

The Canine Distemper-Adeno-Influenza Virus Antigen Combo Test is a lateral flow immunochromatographic assay for the qualitative distinguish diagnosis of canine Distemper virus antigen (CDV Ag), canine Adeno virus antigen (CAV Ag) and canine Influenza virus antigen (CIV Ag) in secretions from dog's eyes, nasal cavities, and anus specimen.

Assay Time: 5-10 minutes

## ◇ PRINCIPLE

The CDV-CAV-CIV Ag Combo Test is based on sandwich lateral flow immunochromatographic assay. The test device has a testing window for the observation of assay running and result reading. The testing window has an invisible T (test) zone and a C (control) zone before running the assay. When the treated sample was applied into the sample hole on the device, the liquid will laterally flow through the surface of the test strip and react with the pre-coated monoclonal antibodies. If there is targeted antigen in the specimen, a visible T line will appear. The C line should always appear after a sample is applied, which indicates a valid result. By this means, the device can accurately indicate the presence of CDV, CAV and CIV antigen in the specimen.

## ◇ REAGENTS AND MATERIALS

- Test devices, with disposable droppers
- Assay buffer
- Cotton swabs
- Products Manual

## ◇ STORAGE AND STABILITY

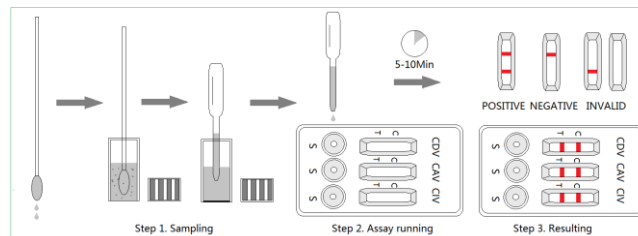
The kit can be stored at room temperature (4-30°C). The test kit is stable through the expiration date (24 months) marked on the package label. DO NOT FREEZE. Do not store the test kit in direct sunlight.

## ◇ TEST PROCEDURE

- Collect dog's ocular, nasal or anus secretions with the cotton swab and make the swab wet sufficiently.
- Insert the swab into the provided assay buffer tube. Agitates it to get efficient sample extraction.
- Take out the test device from the foil pouch and place it horizontally.
- Suck the treated sample extraction from the assay buffer tube and place 3 drops into each sample hole "S" of the

test device.

- Interpret the result in 5-10 minutes. Result after 10 minutes is considered as invalid.



## ◇ INTERPRETATION OF RESULTS

- Positive (+): The presence of both "C" line and zone "T" line, no matter T line is clear or vague.
- Negative (-): Only clear C band appear. No T band.
- Invalid: No colored band appears in C zone. No matter if T band appears.

## ◇ PRECAUTIONS

- All reagents must be at room temperature before running the assay.
- Do not remove test cassette from its pouch until immediately before use.
- Do not use the test beyond its expiration date.
- The components in this kit have been quality control tested as standard batch unit. Do not mix components from different lot numbers.
- All specimens are of potential infection. It must be strictly treated according to the rules and regulations by local states.

## ◇ LIMITATION

Canine Distemper-Adeno-Influenza Virus Antigen Combo Test is for in vitro veterinary diagnosis use only. All result should be considered with other clinical information available with veterinarian. It is suggested to apply a further confirmative method such as RT-PCR when positive result was observed.



J&G Biotech Ltd (Reg. No.: 08419172)

326 Cleveland Road, London, England E18 2AN, UK